



Also consider **Recess-It®**
and **Better-Bench®**



Have questions, or need locator assistance for a
retailer near you,

Please call us at: (916) 361-2601

M-F 9am—3pm Pacific time



From the makers of the
Better-Bench® and **Recess-It®**
Innovis Corporation introduces



LEDGELINE™

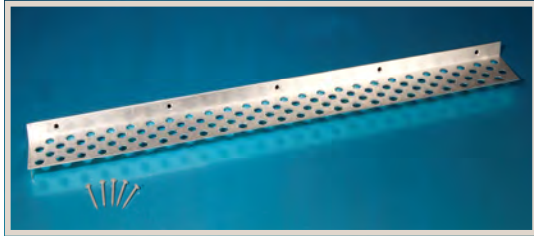
The easy to install, ready to tile shelf!



Innovis Corporation
3790 Happy Lane
Sacramento, CA 95827
(916) 361-2601

Visit us at our website:
www.innoviscorp.com

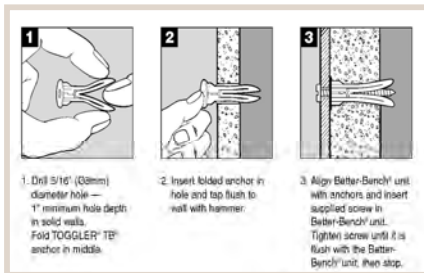
LEDGELINE™



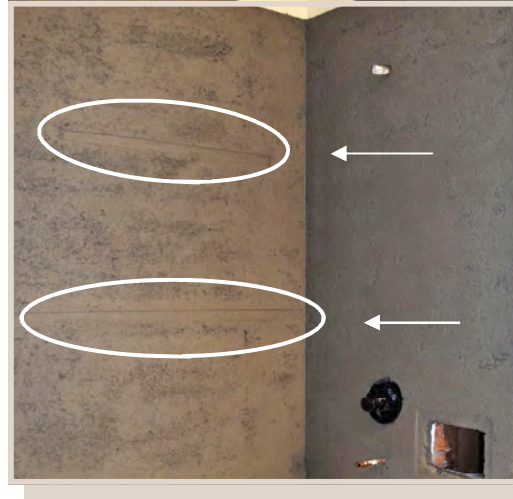
3.25x36+Length. can be cut easily or can be added to additional units to achieve virtually any length desired.



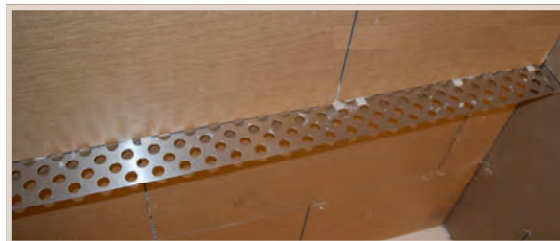
Just use supplied fasteners to mount over preinstalled substrate.



Direct fastening to studs or blocking is eliminated when using supplied hollow wall anchors, as shown .



1. Determine desired location to mount *Ledgeline™*
HINT: Recess mounting flange flush to face of substrate or grind back of tile 1/16th" to allow tile to sit flat to substrate, OR "feather" thin-set to smooth transition over mounting flange.
2. Mount *Ledgeline™* using supplied fasteners.
3. Finish wall as usual allowing material to lock over mounting flange.



4. Place the *Ledgeline™* directly on top edge of selected tile course. Apply surface bull-nose tile (SBN) or other finish material to top and bottom of *Ledgeline™* by using thin-set or mastic to "sandwich" shelf unit. Allow front edge of applied tiles to extend 1/8" minimum to allow for grout coverage of shelf.



5. ENJOY!



LEDGELINE™ is manufactured in the U.S.A.